

Atlas Copco

DYNAPAC TANDEM ASPHALT ROLLERS



Dynapac CC2200 / CC2300 / CC3200 / CC3300 / CC3800
CC4200 / CC5200 / CC6200
CC2200C / CC2300C / CC3200C / CC3300C / CC4200C / CC5200C

Atlas Copco

OUR TANDEM ROLLERS are designed with efficiency in mind - application efficiency, operator efficiency, compaction control efficiency and service efficiency. Performance, visibility, operators comfort, compaction control and serviceability for the CC line will appeal to owners, operators and service crews. The environmental benefits appeal to everyone.

All models have high frequency vibration as standard.

EFFICIENCY IN MIND

TOP QUALITY RESULTS

With the Dynapac rollers you achieve high quality surface finishes through operational features such as soft starting and stopping to prevent unevenness or cracking in the asphalt layers. This allows even an unskilled operator to start and stop without leaving marks. In a panic situation, the machine will drop out of the soft mode and brake immediately, signalling the need for an emergency stop.

HIGHEST AVAILABILITY

There is a number of features to the CC rollers to make servicing quick and easy, ensuring maximum uptime.

The use of a double pump vibration system eliminates the need for a vibration valve, making the system more efficient, aiding servicing and reducing fuel consumption. Both pumps – one for the front drum and one for the rear – can simply be shut off.

With a volume of 750 litres for the CC2200 - CC3300, 900 liters for CC4200 and as much as 1400 liters as an option for for CC5200 - 6200, it gives ample water resources.

THE OPERATOR IN CONTROL

One way of achieving high quality compaction is to optimise the ergonomics, ensuring that operators have continuous visibility of the operation and comfortable access to the controls. The corrosion-free water tank is mounted in the front frame. This helps the rollers feature 1 x 1 metre view and full visibility of all working functions.

You can tailor your roller to local conditions, including operator's platform with ROPS, ROPS cab, aircondition etc.

*EXPERIENCE IS THE **BASE**
OF EXCELLENCE. DYNAPAC
WILL ALWAYS HELP YOU
TO REACH PERFECTION.*



UNIQUE CHARACTERISTICS



CONTROL PANEL WITH VALUABLE INFORMATION

The clear LCD control panel gives operators the information they need. All the gauges are displayed and the operator can change between menus at the touch of a button.

COMPACTS ANY TYPE OF ASPHALT MIX

With high frequency/low amplitude for thin layers and high amplitude for thick layers the machines are versatile and will efficiently compact any type of asphalt mix. Thin layers with high stone content cool off quickly and need to be compacted fast, but use of a high amplitude risks crushing the aggregate. Dynapac recommends a high frequency and lower amplitude.

STEERING SYSTEM WITH FLEXIBILITY

All machines can be equipped with the optional offset drum (split drum and combi rollers have off-set as standard.) This in combination with the asymmetric cab make the machines very easy to operate.

POWERFUL ENGINE

The new models are powered by Cummins QSB 3.3, QSB 4.5 or Deutz TCD3.6. Both Stage IIIA/T3 and Stage IIIB/T4i versions are available.

Dynapac's automatic engine idling system together with a highly efficient hydraulic system makes fuel consumption low and efficient.

Infinite adjustable maximum speed is standard.



OUTSTANDING OPERATOR COMFORT

We have equipped the machines with slideable and turnable seat and steering module for best ergonomics. The engine is placed on the rear module with less heat and noise for the operator. The very low vibration level on the operator's platform also adds to the comfort of the operator.



“The noise level is very low, enabling long working days without fatigue.”

YOUR VISION IS OUR MISSION

Visibility is one of the most important issues for making an asphalt roller efficient and safe to operate. Therefore the machines have full visibility of drum edges, drum surfaces and sprinkler nozzles.

The 4-post ROPS and 1 x 1 meter visibility also give a minimum view obstruction both forward/backward and sideways.

ENVIRONMENTAL THINKING ALL THE WAY

Environmental benefits are achieved through reduced fuel consumption and quieter operation. Efficiency enhancements have saved some 8 kW in the operation of a typical model in the range, with consequent improvements in the running costs and noise. Optional Eco-Mode with fuel savings up to 15 % is also available. It also makes the already quiet CC roller even more silent.

Biodegradable hydraulic fluid is optional. The automatic idling system keep exhaust emission on a low level. Emission controlled engines are standard.

EASY MAINTENANCE IN EVERY DETAIL

Daily service points are few and easily accessible. The position of the engine on the rear module and the large, easy to-open engine hoods contribute to easy and fast service.

The service info displayed directly on the drivers LCD also facilitates service jobs. With lubrication free steering hitch and steering cylinder, very few grease nipples are found on these machines. At the same time, the periods between servicing have been extended. Corrosion-free water tank and sprinkler tubes, in combination with easily accessible filters, ensure reliability and easy maintenance.

Hydraulic hoses can be replaced in individual segments, avoiding the need to fit a full length. Drum shock absorbers also benefit from easy replacement – there is no need to remove the forks or the drums.



ATTENTION TO DETAILS - THE BASE OF PERFECTION

All Dynapac rollers benefit from solid experience, proven concepts – and advanced technology research. And when we introduce a line-up of new features, our first concern is real-life improvements for our users. Easy handling and servicing, and a clear focus on lasting performance.

180 DEGREES

The swiveling operator's module allow a 180° turn of seat, instruments and levers in order to keep the operator in full control.

VISIBILITY

The unique design ensures full visibility of drum surfaces, sprinkler nozzles and drum edges.

COMPACTION DATA

Compaction data that make the machine versatile. A wide frequency and amplitude range provides optimization for any layer thickness.

BACK-UP SPRINKLER SYSTEM

Back-up sprinkler system means less breaks for cleaning of nozzles and includes a backup sprinkler pump.

OFFSET DRUM

The unique offset drum and articulated steering give supreme maneuverability.

WATER CAPACITY

Large water capacity i
operating time between
refill breaks.



EASY NIGHTWORK

Night work is easy. Experience the difference with Night Working Kit with drum edge light and drum surface light.

Dyn@Lyzer

Optional Dyn@Lyzer helps you do a perfect job. Full documentation of temperature, compaction Evib value and number of passes.

OPERATOR PLATFORM

ROPS and two different cab types are available, always with the sliding and swiveling operator's module.

SPLIT DRUM ROLLER

Dynapac offers rollers with split drums. This makes operating easier in confined spaces and reduces the risk of cracks in the asphalt.

LOW EMISSIONS

The fuel efficient Stage IIIA / T3 and Stage IIIB / T4i engines can be equipped with optional ECO-mode achieving up to 15% reduction in fuel consumption.

SERVICE FRIENDLY

Service-friendly, roomy engine compartment. The location on the rear module reduces noise and heat for the operator.

STEERING HITCH

Heavy-duty lubrication-free steering hitch high mounted to allow trouble-free access for engine and water tank maintenance.

increases
en water

COMBINATION ROLLERS

All rollers from CC2200 up to CC5200 can be ordered in Combi versions (with exception for CC3800) to further improve top layer texture. The Combi module is placed rear and is combined with offset steering. Standard equipment includes emulsion sprinkler system, handles and footsteps for tank filling, quick-release of scrapers and cocoa mats for easy cleaning. Heat covers are available as option. Rubber coated drum is available as an option for CC2200C.

COMPACT POWER ENGINE

A choice between diesel engines fulfilling Stage IIIA/T3 and Stage IIIB/T4i offers impressive power reserves and significant operation benefits. Easy cold starting, low noise, rapid diagnostics and faster load acceptance are just some of them. ECO-mode for up to 15% reduction in fuel consumption is available as option.



JOINT CUTTING DISC

The edge press strengthens the asphalt edge, and can also be equipped with the joint cutting disc for asphalt edge trimming prior to jointing.

DYN@LYZER - COMPACTION CONTROL & DOCUMENTATION SYSTEM



DYNAPAC'S EXPERIENCE in Continuous Compaction Control (CCC) or Intelligent Compaction (IC) dates back to the late 70s. Since then we have been able to offer our customers the opportunity to control the compaction work in real time and to document the completed work for improved quality control.

Two Level System

The DYN@LYZER system is built up in two levels.

1. The first level is the Compaction Meter, now using EVIB readings for both soil and asphalt:

On asphalt rollers this is supplemented by the Asphalt Temperature Meter. It utilizes two temperature sensors, one at each end of the roller, to register the surface temperature of the asphalt. The temperature is measured by the sensor that is currently at the front depending on the driving direction. This minimizes the influence of surface water from the drum sprinklers.

2. The second level of the system is the Dynapac Compaction Meter plus the Dyn@lyzer with GNSS (Global Navigation Satellite System):

This registers all the Compaction Meter data and continuously displays the compaction results to the operator on the computer screen. The data is, at the same time, recorded and saved allowing full traceability and quality assurance. The GNSS receiver (such as GPS, GLONASS, Galileo, etc) gives the precise position of the roller on the job site at all times. The level of accuracy depends on site requirements.

DYN@LYZER for Asphalt Compaction Documentation

Records and maps in real time:

- Compaction Meter values
- Progress of Compaction Meter values, relative
- Temperature Meter values
- Number of passes
- Supports the roller operator to optimize compaction effort

Analysis of the compaction

- Compaction Meter values (stiffness)
- Progress of Compaction Meter values (progress of stiffness)
- Temperature
- Number of passes
- Statistics and distribution
- Export PDF report and data text file

Facts about the DYN@LYZER

- Multiple machines can be factory prepared. This ensures a cost effective way to prepare a fleet of machines with the DYN@LYZER as they can share DYN@LYZER computer and GNSS equipment for use as required.
- User-friendly, modern user interface
- 11.6" full color touch screen
- Electronic keyboard for entry of data
- Mobile memory for permanent storage
- Several languages to choose from
- Runs on the roller's 24V battery or internal battery
- Tablet weight: 1.4 kg
- 220V adapter for office use
- Rugged tablet, resistant to dust, moisture and vibrations
- In Multi version, office software is included as well as machine-to-machine communication



The on-board display shows a map of the recorded data to the operator; in this case passes and the asphalt temperature.

BIG FUEL SAVINGS WITH ECOMODE & OPTIMIZATION OF RELATED SYSTEMS

ECOMODE

We are proud to announce that we have fulfilled our promise to offer customers soil and asphalt rollers with very low fuel consumption. The secret is our EcoMode.

We closely monitored the fuel consumption of the new large CC asphalt rollers and the new CG2300. As a result, we can now confirm that in EcoMode, all the rollers consume 15–20% less diesel fuel than our previous range without EcoMode.

We are one of the first manufacturers to equip our rollers with Stage IIIB/T4i engines with very low emissions. The entire range of Dynapac 7-13 t tandem rollers and the new CG2300 all have engines of this type.



GREEN ROLLERS

When using the ECO-system the percentile saving is higher during compaction than during idling and transportation. Combine the 15-20% fuel savings with biodegradable hydraulic oil and very low noise levels and the result is “green” rollers.

HOW DID WE REDUCE THE FUEL CONSUMPTION SO MUCH?

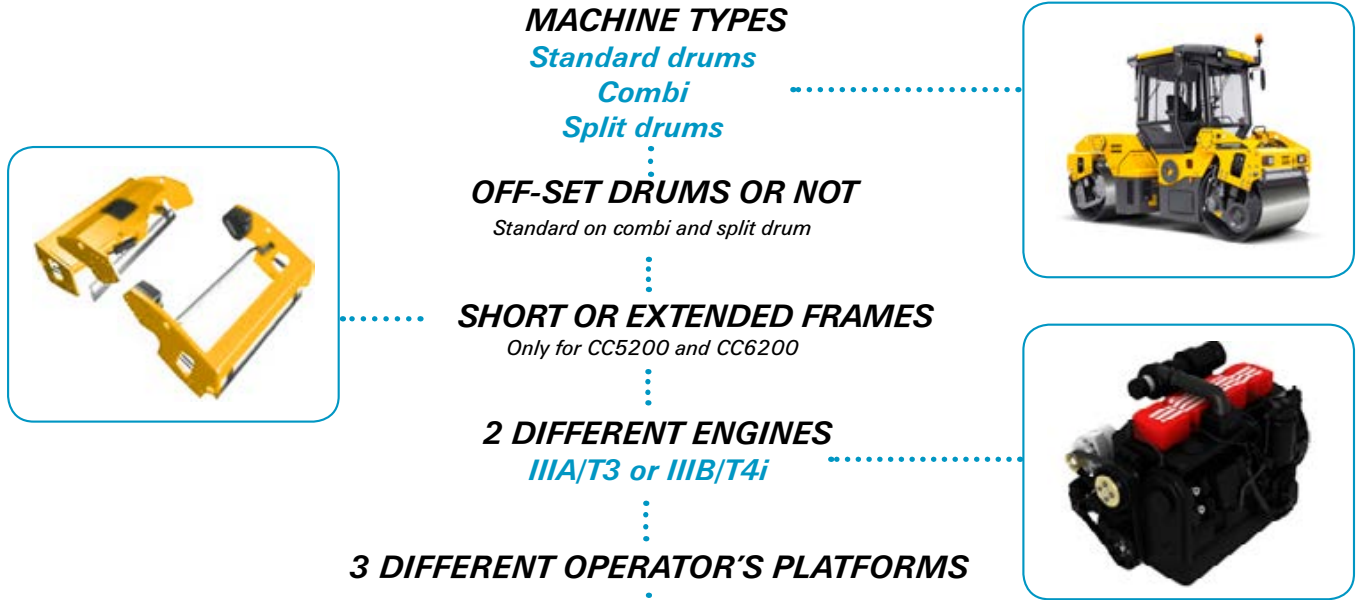
The answer is hard work both with major components and with small details. Here are some examples:

- Double pump vibration system
- Reduced number of hydraulic hose fittings
- Proportional control of cooler fan speed with regards to engine coolant and hydraulic oil temperatures
- Automatic idling of the diesel engine revolutions after 10 seconds in neutral

The CC2200 – CC6200 are amongst the most productive rollers on the market. When using our optimising software tool PaveComp and/or our documentation system Dyn@Lyzer, your results will be even better with regards to compaction, economy and lower environmental impact.



A WIDE SELECTION



ASYMMETRIC CAB

- Integrated ROPS
- Operators station, sliding and rotating
- Seat belt 3"
- Heating system
- Frequency meter/ impactometer
- 3 speed fan system with filter
- Floor mat
- Lights working, H3 (Halogen)
- Panel covers, interior
- Inner roof: Noise absorbing
- Internal rear view mirror
- Hooks: Two
- Charger socket: One 24V & one 12V
- Interior light
- Steering wheel: Adjustable
- Storage: Rear cover and side panel netbag
- Cup and can holder
- Tinted safety glass
- Openable side windows
- Wipers and washers:
- Front/rear also on the asymmetric part
- Rotating beacon
- Rear view mirrors, traffic
- Back-up alarm
- Sprinkler system additional

ASYMMETRIC COMFORT CAB



Asymmetric Cab features +
ACC
Operator's seat, luxury
Radio with MP3

ROPS PLATFORM

- Roll over protection structure
- Floor mat and anti-slip
- Panels: Back cover
- Lights working, H3 (Halogen)
- Charger socket: One 24V & one 12V
- Steering wheel: Adjustable
- Frequency meter/ impactometer
- Storage: In back cover
- Operators station, sliding and rotating
- Operator's seat, suspension
- Seat belt 3"
- Hooks: Two
- Vandal cover
- Rotating beacon
- Lunch box holder
- Back-up alarm
- Sprinkler system additional
- **Selectable options:**
- Rear view mirrors, traffic

OPTIONS CC2200 - CC6200

- Asphalt temp meter with dual sensors
- Biodegradable hydraulic fluid
- Chipsreader (only for CC2200 - CC3300)
- Edge press, front mounted
- First Aid Kit
- Joint cutter disc, 80/150mm
- Lights drum edge
- Rear view mirrors, process view
- Special color (one of two colors)

- Tool set
- Two watertanks for ext. frames*
- Water tank cover, lockable
- Service kit 50/500/1000 h
- Decal risk location (GOST)
- Lights, direction, side mounted
- Lights, driving (left or right hand)
- Lights, licence plate
- Steering, emergency

- Slow moving vehicle sign
- Foot rest
- Rotating beacon, ignition controlled
- Heat cover wheel (for Combi only)
- Dynapac Compaction Analyzer
- Tachograph
- Tachograph prep.
- Fire extinguisher

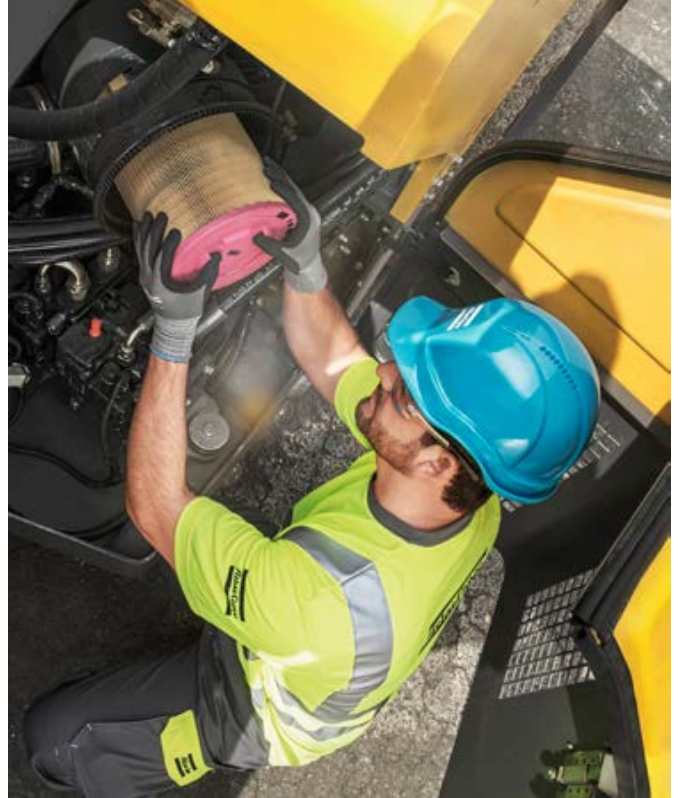
* only for CC5200 and CC6200

SERVICE COMMITTED TO YOUR FUTURE

TRAINING

Atlas Copco Road Construction Equipment division puts a lot of focus on development of local competence within our customer centers and dealers. With many years of experience at our production facilities in handling Road Construction Equipment we have developed training packages that allows our service technicians as well as our customers to develop competence in both equipment application and maintenance. Please check our website for suitable training program or ask our local representative.

Find a suitable training at [dynapac.com / training](http://dynapac.com/training)



EXTENDED WARRANTY & SERVICE AGREEMENTS

We have developed service agreements based on customer feedback, application know-how, field support knowledge, and product development experience. You can select a service agreement that meets your needs and budget, allowing you to get the most out of your equipment investment.

UPGRADE KITS

Our upgrade kits are an economical solution that ensures your equipment is up to date with the latest Atlas Copco technology. Upgrades are based on proven technological solutions, readily available and easily installed. They will maximize your equipment's productivity and market value, as well as optimize your equipment's efficiency, to increase your profits.



ALL-IN-ONE BOX KITS

An all-in-one box, tailored to match your equipment. The parts you need, when you need them! An all-in-one box contains all the parts required as part of the equipment's scheduled maintenance program. When installed by an Atlas Copco certified technician, you keep your downtime to a minimum and your equipment in top condition its entire life.

Easy to obtain and attractively priced, the most effective solution to keep your maintenance budget low.

Find a suitable kit at [dynapac.com / kitselector](http://dynapac.com/kitselector)

FLUIDS

- The right fluid optimizes machine performance
- Simplified selection process, less time spent on finding the right oil
- Delivery in a handy container, no need for transfer from an oil drum
- All-in-one delivery, less time spent on waiting and dealing with different suppliers
- One invoice, less administration

Find a suitable fluid at [dynapac.com / fluidselector](http://dynapac.com/fluidselector)

GO MOBILE

Construction App

Find all the information about Atlas Copco Construction Technique's products and services.

Parts Online

User-friendly platform to find the spare parts and catalogues for construction equipment.

Shop Online

Handle your orders 24 hours a day. Fast, easy and safe.



TECHNICAL DATA DYNAPAC TANDEM ASPHALT ROLLERS

	CC2200	CC2300	CC3200	CC3300	CC3800	CC4200	CC5200	CC6200
Drum width, mm	1500	1500	1730	1730	1730	1730	1950	2130
MASSES								
Operating mass, kg (incl. ROPS)	7,600	8,500	8,150	9,000	9,400	10,200	11,300	12,000
Module mass, kg (front/rear)	3,800/3,800	4,250/4,250	4,075/4,075	4,500/4,500	4,700/4,700	5,100/ 5,100	5,650/5,650	60000/6,000
TRACTION								
Speed range	0 -12	0 -12	0-12	0-12	0 -12	0-12	0-12	0-12
Vertical oscillation	±7°	±7°	±7°	±7°	±7	±7°	±7°	±7°
Theor. gradeability	42 %	39 %	37 %	35 %	37 %	45 %	40 %	36 %
COMPACTION								
Centrifugal force, kN (high/low amplitude)	78/67	72/59	90/75	79/64	90/75	139/ 92	154/101	166/ 106
Nominal amplitude, mm (high/low)	0.7/0.3	0.5/0.2	0.7/0.3 mm	0.5/0.2	0.7/0.3	0.8/ 0.3	0.8/0.3 mm	0.8/ 0.3
Static linear load kg/cm (front/rear)	25.3/25.3	28.3/28.3	23.6/23.6	26.0/26.0	27.2/27.2	29.5/ 29.5	29.0/29.0	28.2/28.2
Vibration frequency, Hz (high/low amplitude)	48/67	48/67	48/67	48/67	48/67	51/ 67	51/67	51/ 67
Water tank, l	750	750	750	750	750	900	900/1150/1400	
ENGINE								
Manufacturer/Model	Cummins QSB 3.3 IIIA/T3				Cummins QSB 4.5 IIIA/T3			
Type	Water cooled turbo Diesel with After Cooler				Water cooled turbo Diesel with After Cooler			
Rated power, SAE J1995	74 kW (99 hp) @ 2,200 rpm				93 kW (125 hp) @ 2,200 rpm* 113 kW (152 hp) @ 2,200 rpm**			
Fuel tank capacity, l	130				240			
Manufacturer/Model	Deutz TCD 3.6 III BT4i				Cummins QSB 4.5 III BT4i			
Type	Water cooled turbo Diesel with After Cooler				Water cooled turbo Diesel with After Cooler			
Rated power, SAE J1995	75 kW (100 hp) @ 2,200 rpm				97 kW (130 hp) @ 2,200 rpm* 119 kW (160 hp) @ 2,200 rpm**			
Fuel tank capacity, l	130				240			

* CC4200 and CC5200 only
** CC6200 only

COMMITTED TO SUSTAINABLE PRODUCTIVITY

We stand by our responsibilities towards our customers, towards the environment and the people around us. We make performance stand the test of time.

This is what we call - Sustainable Productivity.

Dynapac Compaction Equipment AB

Industrivägen 2, 371 31 Karlskrona, Sweden

Phone: +46 455 30 60 00 - Fax: +46 455 30 60 30 www.atlascopco.com

